

International Association for the Psychology of Religion

Announcements



Research



Conferences



The International Association for the Psychology of Religion (IAPR) is an international organization promoting the scientific research and exchange within the field of the psychology of religion. The Association is not partial to any particular trend but aspires to provide a platform for the entire spectrum of the scientific-psychological study of religion for psychologists of religion from all over the world.

Website: www.iaprweb.org

Become a member or renew your membership :

<http://www.iaprweb.org/membership.html>

Benefits of membership:

1. Regular membership with the IAPR includes the subscription to the *Archive for the Psychology of Religion*. For regular members, print and online version are free.
2. Members of the IAPR pay reduced conference fees for the organization's conferences.
3. IAPR members receive special discounts for their subscriptions to:
 - a) The *International Journal for the Psychology of Religion*: \$43/£26/€34 instead of \$62/£37/€49.
 - b) *Mental Health, Religion & Culture*: \$100/£60/€80 instead of \$386/£231/€441.
4. IAPR members receive the Association's e-mail newsletters which keep you in touch with the scientific community and inform you about conferences, job advertisements, funding opportunities, key publications, and the Association's latest developments and activities.

Announcements



Dear IAPR members,

If you would like to add information in future newsletters please e-mail me the text. This may concern general announcements, conferences (future and report from past ones), job opportunities, key publications, or any other information you think IAPR members might be interested in.

If you are an early career researcher (PhD student or postdoc) and would like to see your work featured in the newsletter, contact me also.

Thank you,

Valerie van Mulukom
Editor of the IAPR newsletter

Contact information:

Dr Valerie van Mulukom
Coventry University
Centre for Research in Psychology, Behaviour and
Achievement
Brain, Belief and Behaviour Lab
E-mail address: valerie.vanmulukom@coventry.ac.uk

Announcements



Dear IAPR members,

At our last IAPR General Assembly in Hamar, Norway, we voted for a change of membership fee: From 2018, regular members from category I nations will pay slightly higher membership fees, whilst others will pay less. Classification details will soon be given on the IAPR website.

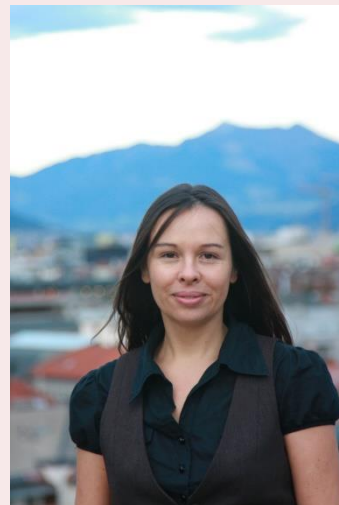
And we have now finally made the practical transfer from me - the 'old' General Secretary - to Dr Heidi Froelund Pedersen, our new General Secretary. I am grateful to her for accepting the position, and convinced that she will do a great job! Please contact her with all future requests, at heidifrolund@clin.au.dk.

I thank you for the trust you have placed in me. It was a pleasure working for and with you!

With best wishes,
Tatjana Schnell

--
Prof Dr Tatjana Schnell
Associate Professor
Innsbruck University
Institute of Psychology
Innrain 52
6020 Innsbruck
Austria

Tatjana.Schnell@uibk.ac.at





New book:

The Emergence and Evolution of Religion

By Means of Natural Selection

By Jonathan H. Turner, Alexandra Maryanski, Anders Klostergaard Petersen, Armin W. Geertz

Written by leading theorists and empirical researchers, this book presents new ways of addressing the old question: Why did religion first emerge and then continue to evolve in all human societies? The authors of the book—each with a different background across the social sciences and humanities—assimilate conceptual leads and empirical findings from anthropology, evolutionary biology, evolutionary sociology, neurology, primate behavioural studies, explanations of human interaction and group dynamics, and a wide range of religious scholarship to construct a deeper and more powerful explanation of the origins and subsequent evolutionary development of religions than can currently be found in what is now vast literature.

While explaining religion has been a central question in many disciplines for a long time, this book draws upon a much wider array of literature to develop a robust and cross-disciplinary analysis of religion. The book remains true to its subtitle by emphasizing an array of both biological and sociocultural forms of selection dynamics that are fundamental to explaining religion as a universal institution in human societies. In addition to Darwinian selection, which can explain the biology and neurology of religion, the book outlines a set of four additional types of sociocultural natural selection that can fill out the explanation of why religion first emerged as an institutional system in human societies, and why it has continued to evolve over the last 300,000 years of societal evolution. These sociocultural forms of natural selection are labelled by the names of the early sociologists who first emphasized them, and they can be seen as a necessary supplement to the type of natural selection theorized by Charles Darwin. Explanations of religion that remain in the shadow cast by Darwin's great insights will, it is argued, remain narrow and incomplete when explaining a robust sociocultural phenomenon like religion.

About the Authors

Jonathan H. Turner is 38th University Professor, University of California System, Research Professor, University of California, Santa Barbara, and Distinguished Professor of the Graduate Division, University of California, Riverside. He is also Director of the Institute for Theoretical Social Science, Santa Barbara, CA, USA.

Alexandra Maryanski is Professor of Sociology at the University of California, Riverside, USA.

Anders Klostergaard Petersen is Professor at the Department for the Study of Religion, School of Culture and Society, Aarhus University, Denmark.

Armin W. Geertz is Professor in the History of Religions at the Department for the Study of Religion, School of Culture and Society, and Jens Christian Skou Fellow at the Aarhus Institute of Advanced Studies, Aarhus University, Denmark.

Link: <https://www.routledge.com/The-Emergence-and-Evolution-of-Religion-By-Means-of-Natural-Selection/Turner-Maryanski-Petersen-Geertz/p/book/9781138080928>

Conferences



IASC Call for Workshop Proposals

*2018 Annual Conference, Union Theological Seminary
“Religious Conflicts: External and Internal”*

Location: New York, USA

Date: July 8-10, 2018

IASC members* are invited to submit workshop proposals for the next IASC annual conference To be held in New York City. Workshops will be offered in breakout sessions for 1½ hours each, Morning and afternoon, on Monday, July 9. There will be up to 8 total workshop slots possible (four at 11:00, and four at 16:00). The theme of the conference is “*Religious Conflicts: External and Internal,*” and priority will be given to workshops addressing some aspect of this Theme – for example, inter-religious conflicts in the practice of spiritual care and narrative Medicine; multiple religious belonging and inner spiritual conflicts. We especially invite Proposals from members in the fields of medicine and psychology.

Conference registration fee will be waived for all accepted workshop presenters (but workshop Presenters are responsible for their own travel and lodging expenses).

Deadline for Proposals: Feb. 28, 2018.

Please submit your proposals, or any questions you may have, via email to Prof. Dr. Isabelle Noth (IASC President) at isabelle.noth@theol.unibe.ch and Prof. Dr. Pamela Cooper-White (IASC governing board member and conference host) at pcooperwhite@uts.columbia.edu The selection will be made by the IASC Scientific Board by end of March.

**Note: current membership in IASC is not required to submit a proposal, but it is expected that if a proposal is accepted, the presenter will join IASC prior to registering for the conference.*



Research



Call for (Un)published Data on the Relationship between Embodiment and Religion/Spirituality

Dear colleagues,

As part of a grant funded project on the relations among postural, psychological, and physiological aspects of religious practice, we are seeking (un)published data relevant to the study of embodiment in the context of religion and spirituality. This is not a largely published area and we are therefore making a call for any unpublished data.

We are particularly interested in studies that have manipulated or observed participants' bodily postures in the context of religion and spirituality (investigation of typical religious postures and/or any posture's effects on religious variables).

If you have any unpublished data regarding this topic, please contact study coordinator, Megan Edwards, at <megan.edwards@duke.edu> with a brief description of the study's design and measures so that we may reach out to you.

If you have published data regarding this topic, please send us a quick note with the reference and let us know if you collected any additional relevant data not presented in the published paper. Please do not hesitate to contact us with any further questions you may have.

We appreciate your assistance and contribution to our work!

Best regards,
Patty Van Cappellen

Patty Van Cappellen, Ph.D.
Associate Director of the Interdisciplinary Behavioral Research Center (IBRC)
Duke University Social Science Research Institute
2024 W. Main St., Erwin Mill, Bay B, Room 226 Durham, NC 27005
IBRC: <https://ibrc.ssri.duke.edu>
<http://www.pattyvancappellen.com/>

Job Openings & Grants



Religious Coping Styles among People Dealing with Internal Religious and Spiritual Struggles

Post-doc (60%) position in Psychology of Religion / Clinical Psychology / Spiritual Care

Responsibilities

The Institute of Practical Theology and the Institute of Psychology will conduct research on the subject of religious and spiritual struggles. Under the supervision of Prof. Dr. Isabelle Noth and Prof. Dr. Hansjörg Znoj, the post-doc fellow will concentrate on emotion and emotion regulation in religious coping strategies, such as meditating, reading the Bible/Koran, praying or abiding by a belief system.

The candidate will be part of an interdisciplinary research group at the University of Bern working on internal religious conflicts and coping strategies. The candidate will bring training and experience in empirical research methods and will benefit from the institutes' and the university's infrastructure for the promotion of researchers.

Requirements

The post-doc candidate holds a PhD in Theology, Psychology, or Religious Studies, and must exhibit existing special interest in the field of religion and/or spirituality. Strong language skills in English and communication skills are expected.

Further information

The position is funded for four years (interim evaluation after 2 years) from February 1, 2018. The salary will match the current base salary paid by the Swiss National Science Foundation: for Post-docs (50%) ca. 60.000 CHF per annum. A work space will be provided.

Applications in German or English (one PDF, including CV, letter of motivation, certificates and diplomas, and a list of publications) as well as enquiries about the positions should be sent by email to isabelle.noth@theol.unibe.ch.

Equal Employment Opportunities Policy: The University of Bern strives to increase the percentage of women in academic positions. For this reason we would especially like to encourage qualified female academics to apply.

